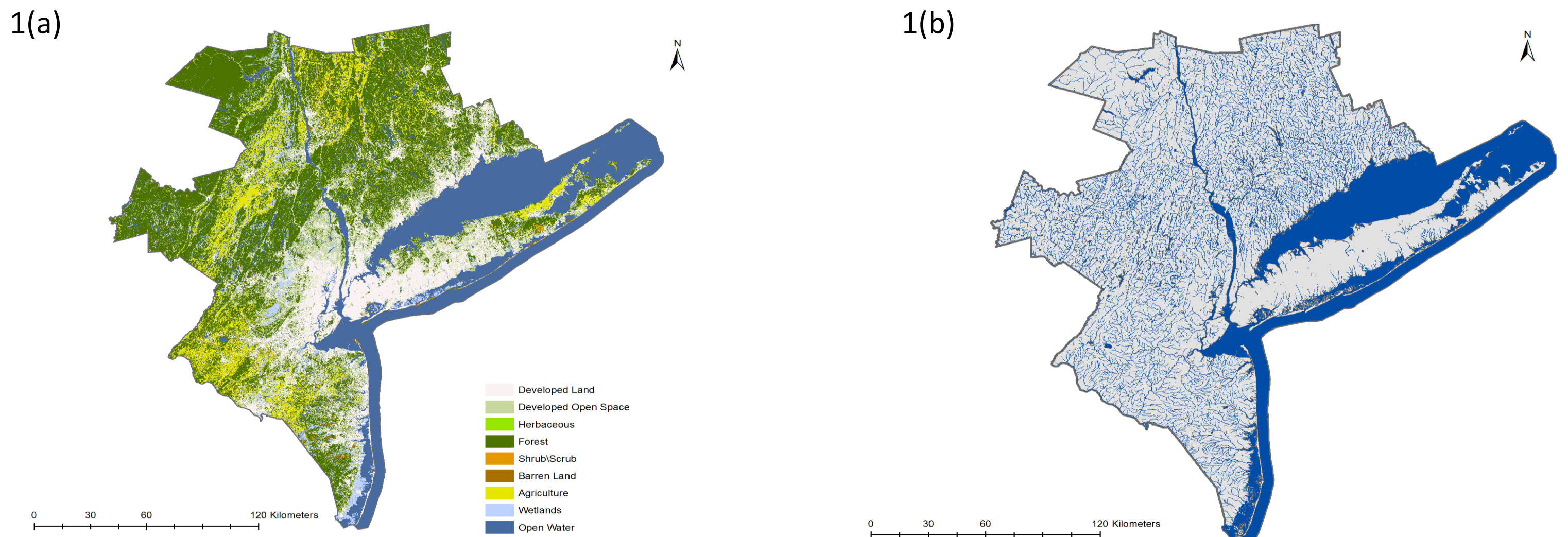


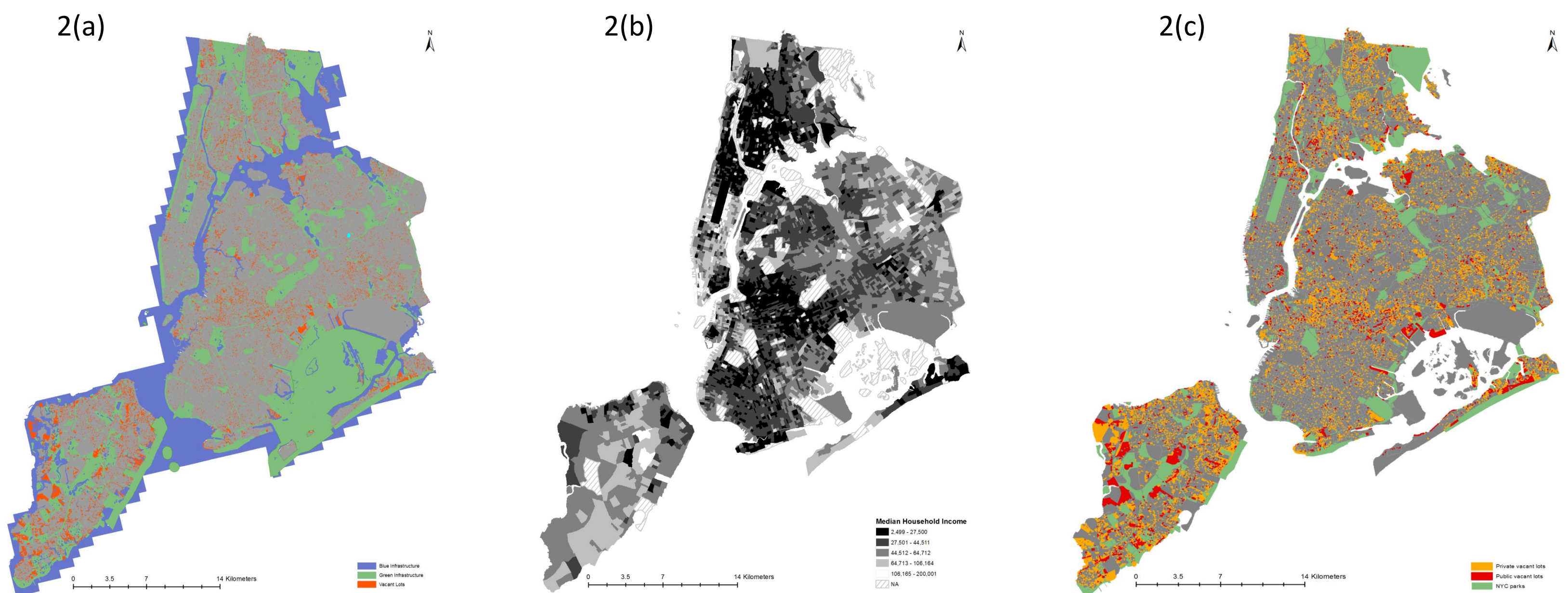
# Regional Biosphere Design and Ecosystem Approach to Metro NYC Region



**Green and Blue Infrastructure of Metro NYC Biosphere** 1(a) Green infrastructure; 1(b) Blue infrastructure

In this research we undertake a multi-scale analysis of the NYC Metro region, studying land use patterns and the potential for a biosphere design at the regional level, and analyzing green infrastructure and ecosystem services at a finer scale within New York City. Conceptualizing the region as a combined system of ecological and social networks enables a holistic framework for research and decision making to protect the region's habitats and biodiversity, and enhance its resilience.

We follow Solecki and Rosenzweig (2004) and the Regional Planning Association (RPA) to define NYC Urban Biosphere from a regional and watershed perspective encompassing 30 counties in 4 states (New York, New Jersey, Connecticut and Pennsylvania) with population of over 22 million and a 1.3 trillion economy.



**Green Infrastructure and Socioeconomic Characteristics in NYC** 2(a) Parks and other open space in NYC; 2(b) Median household income in NYC at the census block group level; 2(c) Private and public vacant lots in NYC

## Research team

P. Timon McPhearson (PhD), Peleg Kremer (PhD), Zoé Hamstead  
Tishman Environment and Design Center, The New School  
Contact: kremerp@newschool.edu

## Data sources

The National Land Cover Database (NLCD), 2006.; US Census 2000, SF3.; MapPLUTO, NYC Department of City Planning, 2010; DOITT NYC; Tele Atlas inc.; NYS GIS clearinghouse; NYC DataMine.

## References

Solecki, W. D., & Rosenzweig, C. (2004). Biodiversity, biosphere reserves, and the Big Apple: a study of the New York Metropolitan Region. *Annals of the New York Academy of Sciences*, 1023, 105-124.