

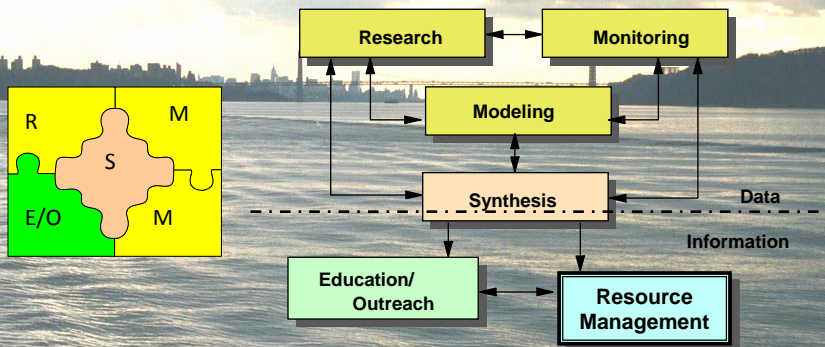
Hudson River Research

Source to Sink Workshop
October 1, 2010
Huntington Wildlife Forest

Dennis Suszkowski, Ph.D.
Science Director
Hudson River Foundation



Hudson River Estuary Management Program *perspective...*



Science/Management Paradigm

Hudson River Foundation *perspective...*

Portfolio of Investments

- Long-term or fundamental importance
- Near-term importance (5-10 Years)
- Immediate importance

Functional Categories

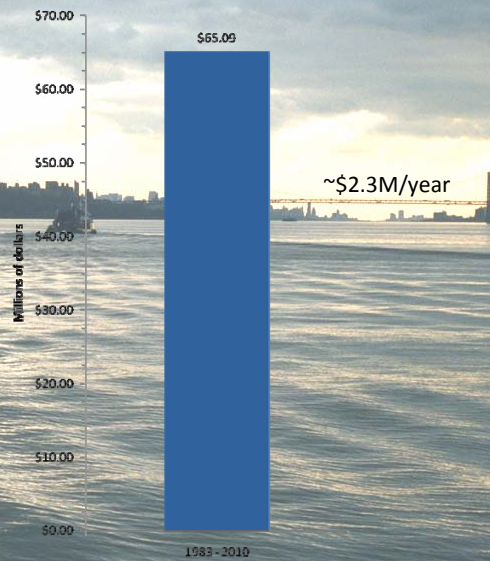
- Resource/key species
- Dynamics of food webs
- Hydrodynamics/sediment transport
- Toxics333333
- Public Policy



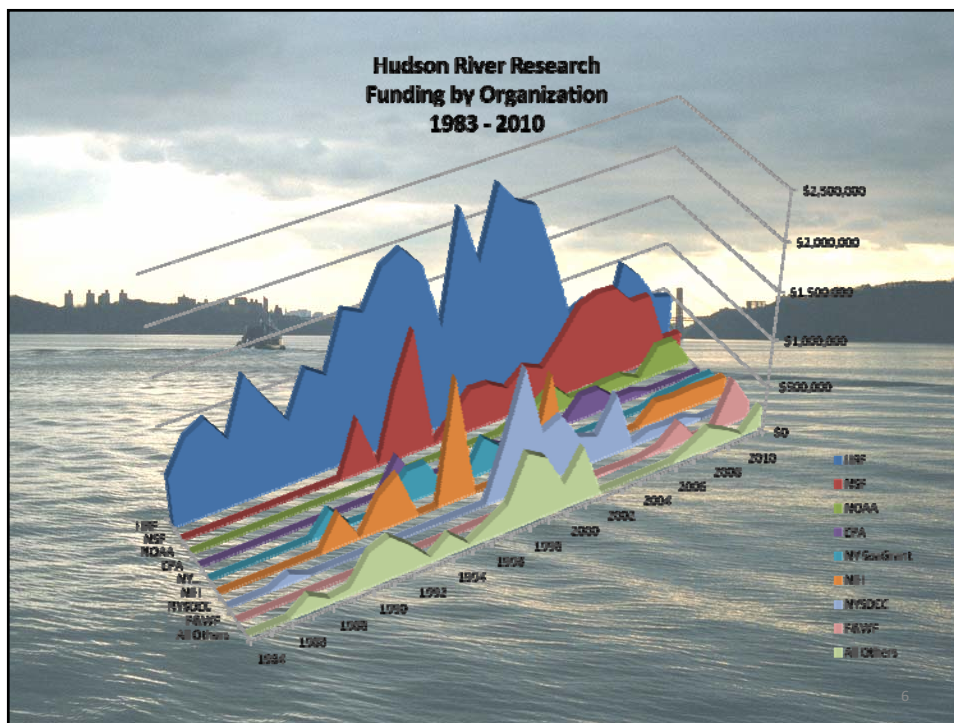
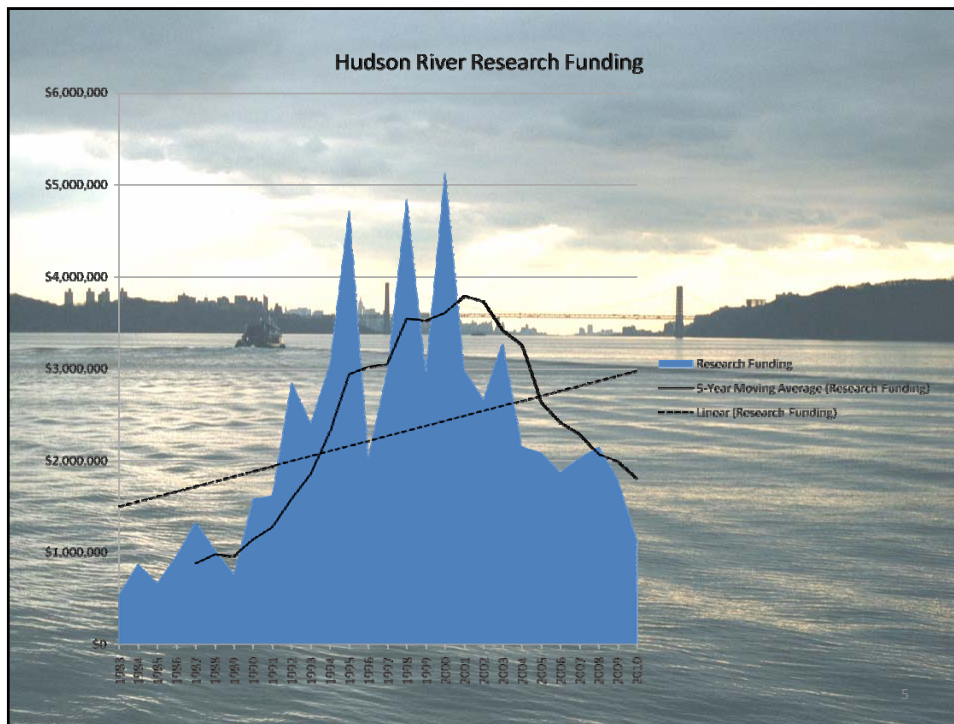
“... make science integral to decision-making...”

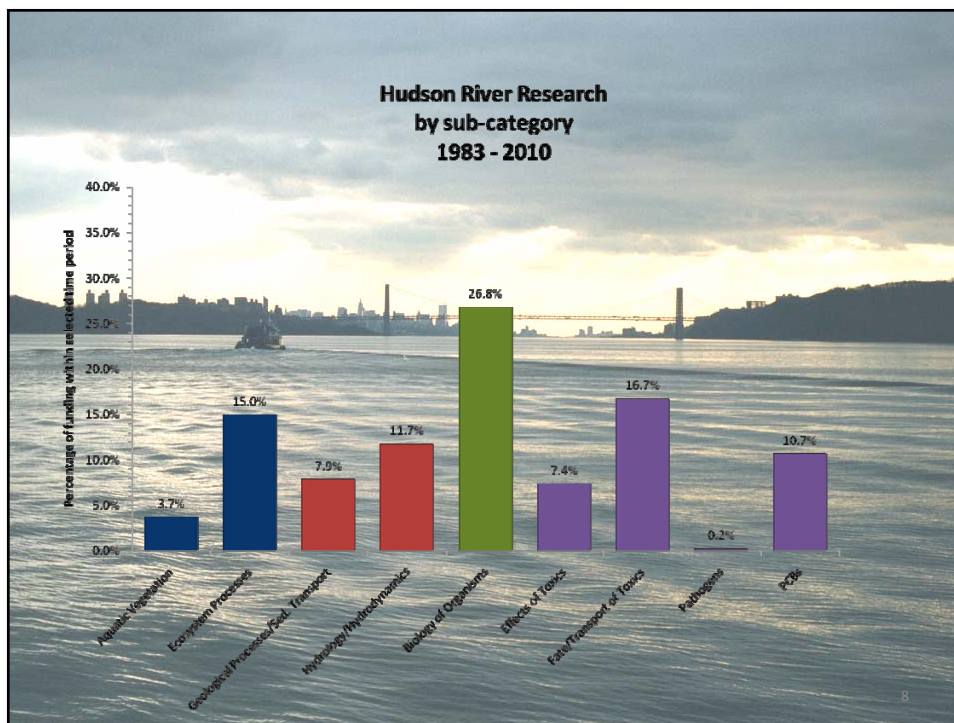
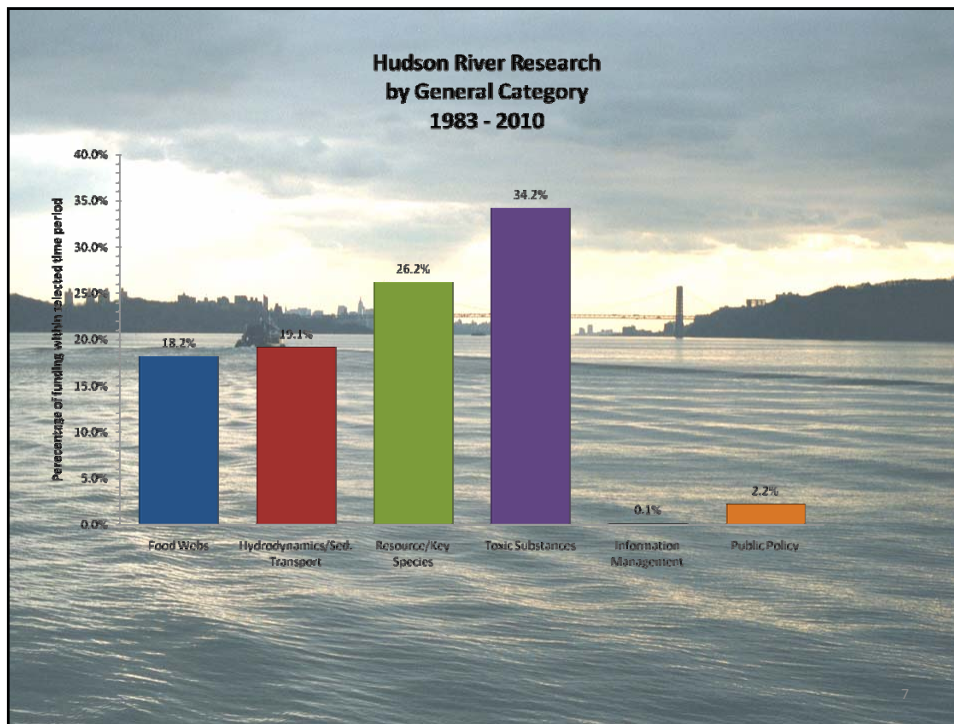
3

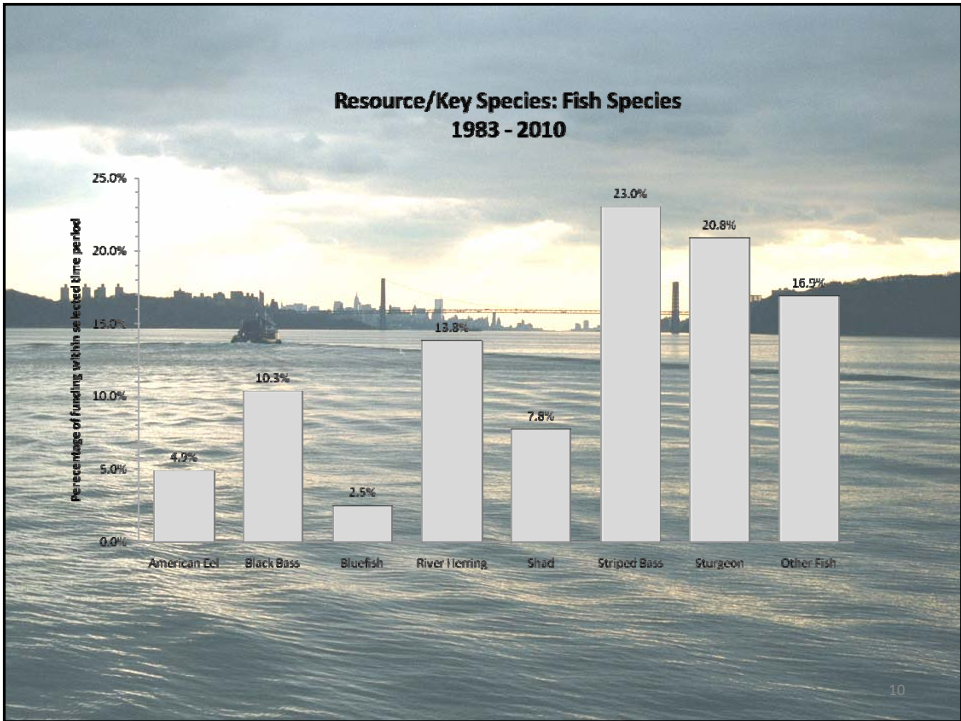
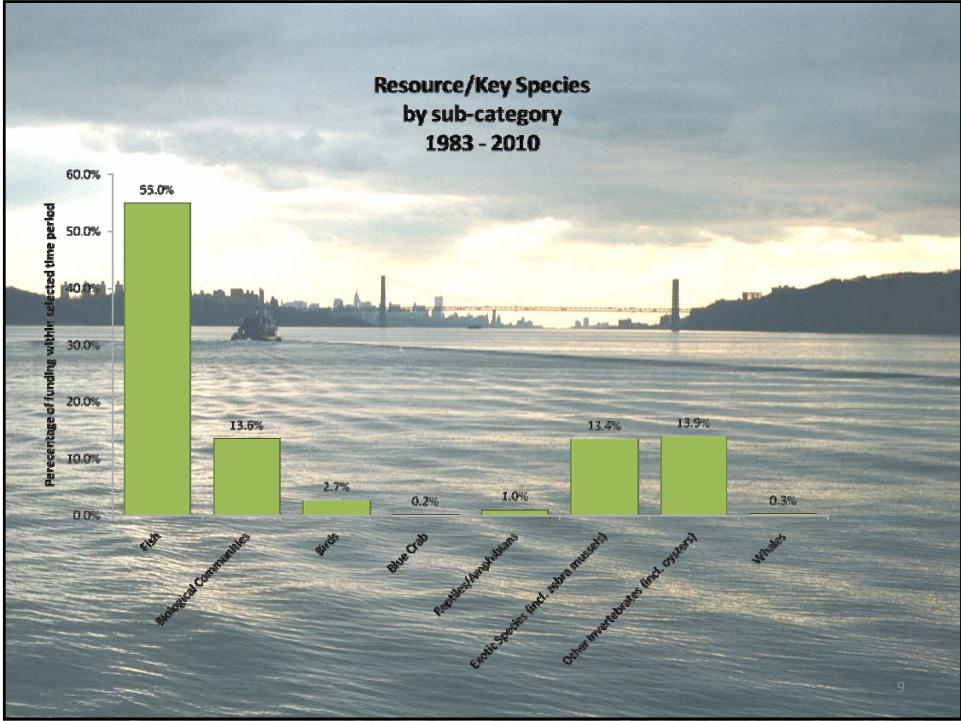
Hudson River Research Funding 1983 - 2010

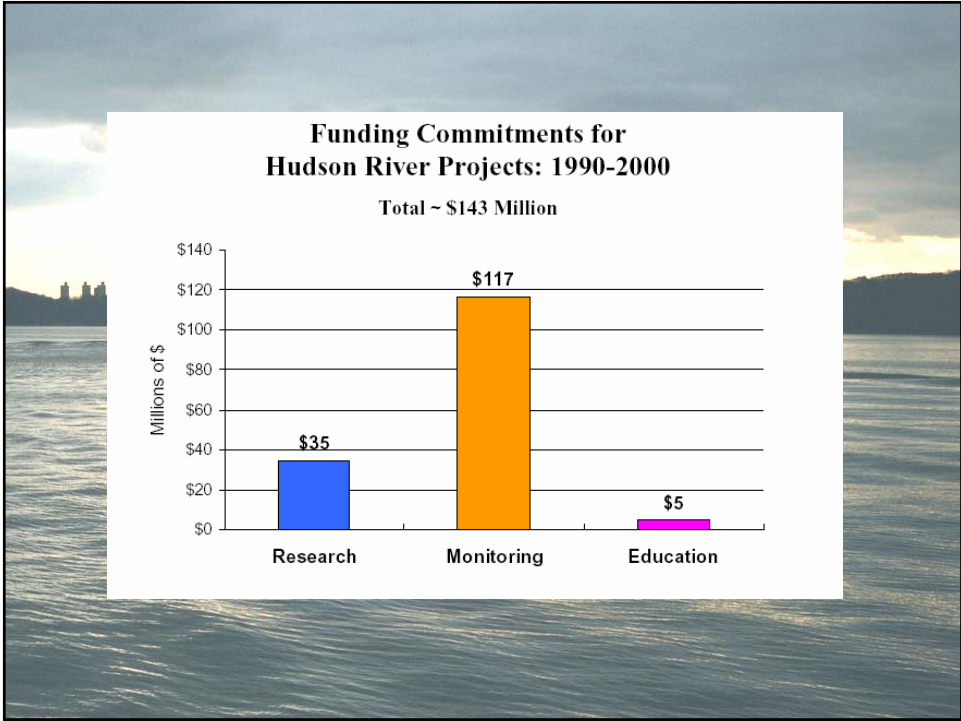
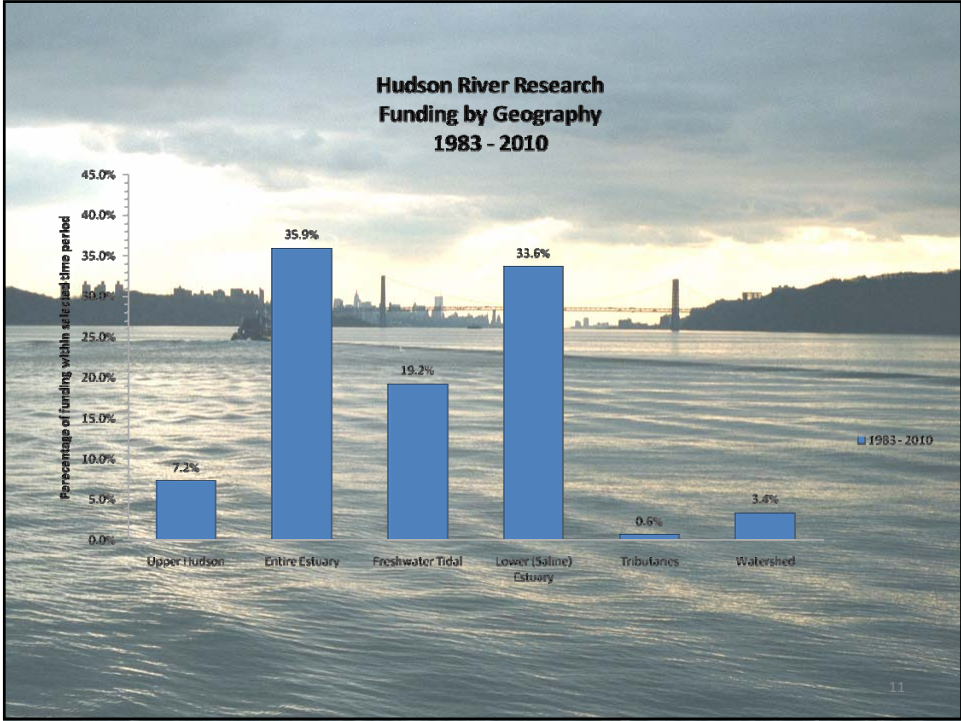


4









**Hudson River Monitoring (Includes Assessments,
Inventories, Surveys and Data Management)
by Funding Source: 1990-2000
Total ~ \$117 million**

